

An Accountability Framework For Equitable Transitions to Adulthood for Youth in Care in Canada

The Equitable Standards & Evaluation Model



CWLC | **LBEC**

Child Welfare League of Canada
Ligue pour le bien-être de l'enfance du Canada

Dr. Melanie M. Doucet, Consultant & Project Lead
Marie Christian, Program Director, VOICES Manitoba
Sam Pothier, Youth Engagement Specialist, YES Manitoba

Our funders

Max Bell
Foundation





THE 8 TRANSITION TO ADULTHOOD PILLARS

1 Financial

Every young person should have the financial resources required to meet their needs. Youth in care deserve to have a financial starting point that is above the poverty line, and allows them to pursue their career interests and dreams.

2 Educational & Professional Development

Every young person should experience an environment where they can learn and grow in ways that are meaningful to them and at their own pace.

3 Housing

Every young person should have a place they can call home, without strict rules and conditions to abide by.

4 Relationships

Every young person should have people in their life that they can count on unconditionally and interdependently. Youth in care need to feel that they belong, have worth and are valuable members of their communities.

5 Culture & Spirituality

Every young person should be connected to their culture and spirituality, in ways that are meaningful to them, safe, and at their own pace.

6 Health & Wellbeing

Every young person should be provided with timely ongoing services and benefits that support their lifelong health and well-being. These supports need to be offered within a trauma-informed, non-judgemental harm reduction approach, without significant wait times.

7 Advocacy & Rights

Every young person should have their rights respected and should experience environments where their voices are heard, and their silence is addressed holistically.

8 Emerging Adulthood Development

Every young person should experience environments that cultivate personal growth and development as they transition into adulthood.

Pillar 2 : Educational & Professional Development
SCORE SHEET

1	HIGH SCHOOL GRADUATION	/
2	SECONDARY LEVEL EDUCATION MENTORSHIP & SUPPORTS	/
3	SCHOOL STABILITY	/
4	POST-SECONDARY APPLICATIONS	/
5	FULL POST-SECONDARY SUPPORTS	/
6	POST-SECONDARY SCHOLARSHIPS, GRANTS AND BURSARIES	/
7	PEER NAVIGATION	/
8	SECURE CAREER PATH	/
9	ONGOING LEARNING NEEDS ASSESSMENTS	/
10	ONGOING SPECIALIZED LEARNING SUPPORTS	/
11	CULTURAL LEARNING OPPORTUNITIES	/
12	ALTERNATIVE HANDS-ON LEARNING	/
13	EMPLOYMENT TRAINING AND SUPPORTS	/
14	LIVED EXPERIENCE INCOME OPPORTUNITIES	/
15	COMMUNITY VOLUNTEERING OPPORTUNITIES	/

TOTAL SCORE PILLAR 2: EDUCATIONAL & PROFESSIONAL DEVELOPMENT – total of final scores for each key support (numerator) / total of denominator scores for each key support (denominator). Calculate the % score by dividing numerator by denominator, and multiply by 100.

TOTAL SCORE : /

TOTAL PERCENTAGE : %

| The Equitable Standards Evaluation Model

Three Major Elements

A

Key support implementation

B

Collaboration between responsible key stakeholders

C

Advocacy

The Equitable Standards Evaluation Model

Fidelity Scale

1

ORANGE – minimal level

2

YELLOW – moderate level

3

BLUE – strong level

4

GREEN – exceptional level

6 steps to complete the Equitable Standards Evaluation Process



Undertake a baseline assessment of fidelity to the Equitable Standards using the Evaluation Model, which was formulated based on the list of key supports required under each of the eight Transition to Adulthood Pillar.



Calculate the fidelity score for each key support + percentage score for each Transition to Adulthood Pillar, and identify key areas for improvement.



Develop a concrete action plan* based on the outcome of the assessment: short-term (key supports that can be implemented within 1 year), medium-term (key supports that can be implemented within 2 years) and long-term (key supports that can be implemented within 5 years).



Publicly release the Equitable Standards Action Plan to showcase transparency and accountability to the youth in care community.



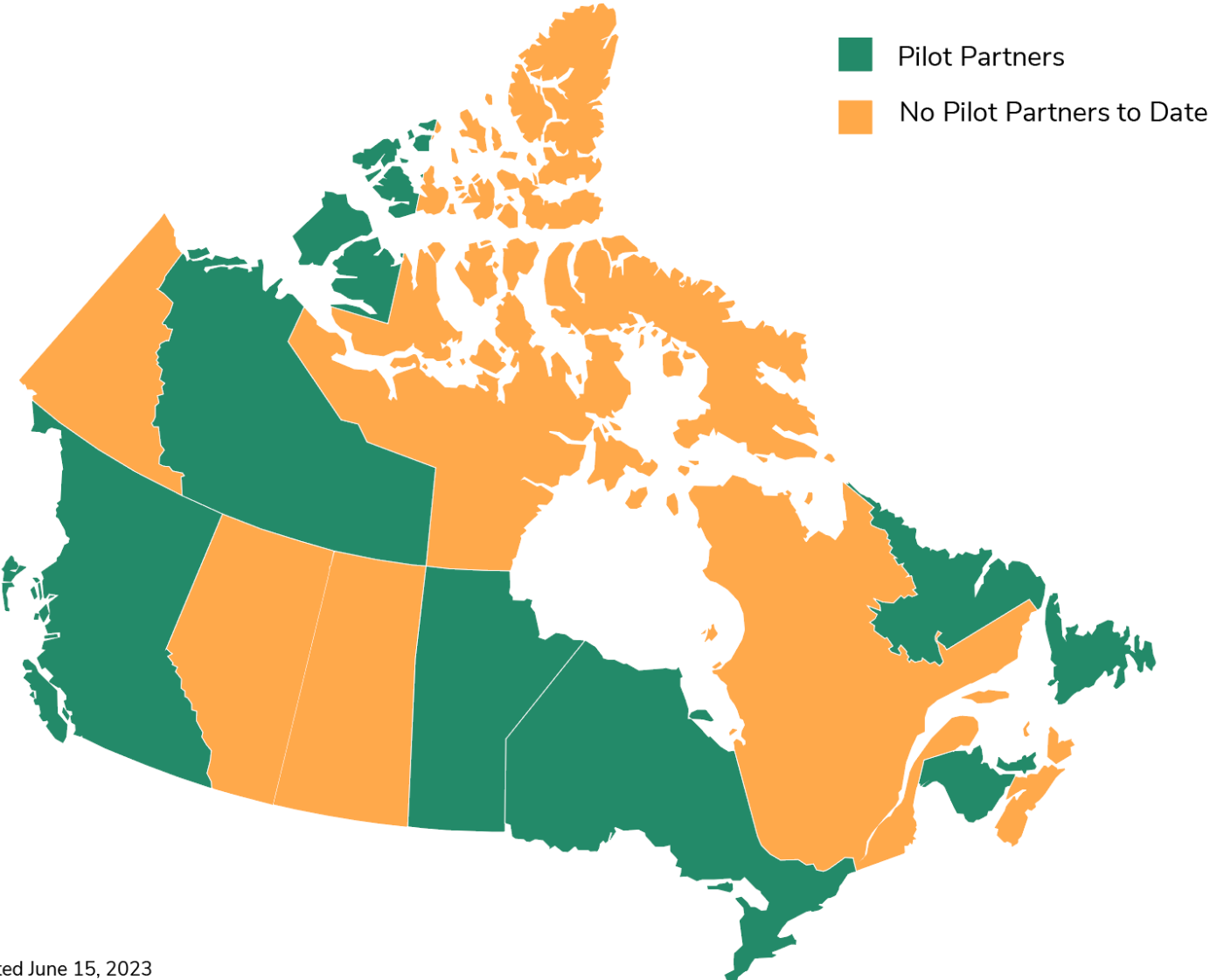
Establish an Equitable Standards Steering Committee, with diverse youth in/from care representation*, to regularly review the implementation progress of the Equitable Standards Action Plan.



Re-do the Evaluation Process & publish an Equitable Standards Action Plan Progress Update Report every 2-3 years to ensure ongoing transparency, accountability, progress and commitment of fidelity to the Equitable Standards.



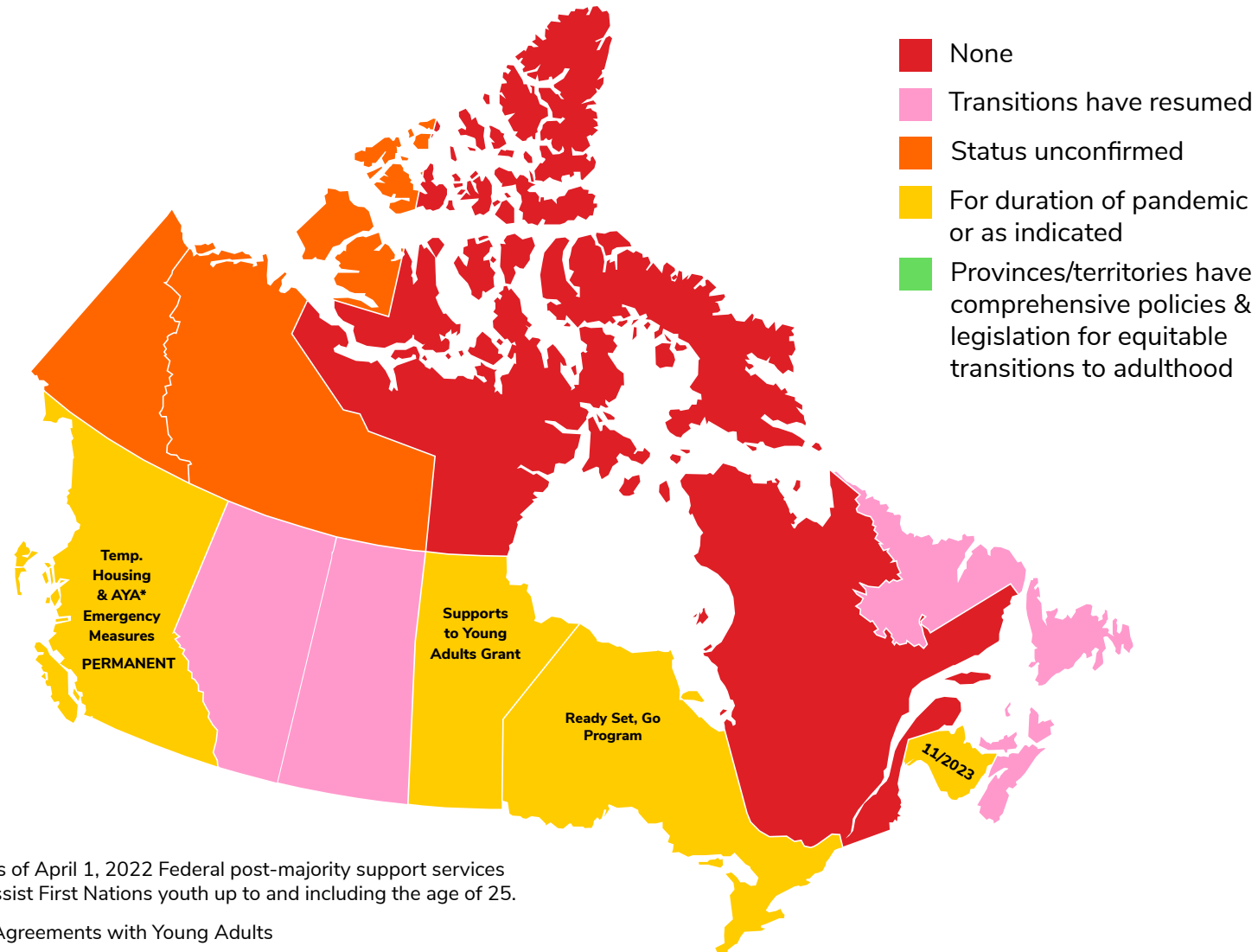
Evaluation Model Pilot Partners



Updated June 15, 2023

PROVINCIAL, TERRITORIAL MORATORIUMS ON YOUTH TRANSITIONS OUT OF CHILD WELFARE

Updated on April 25, 2023

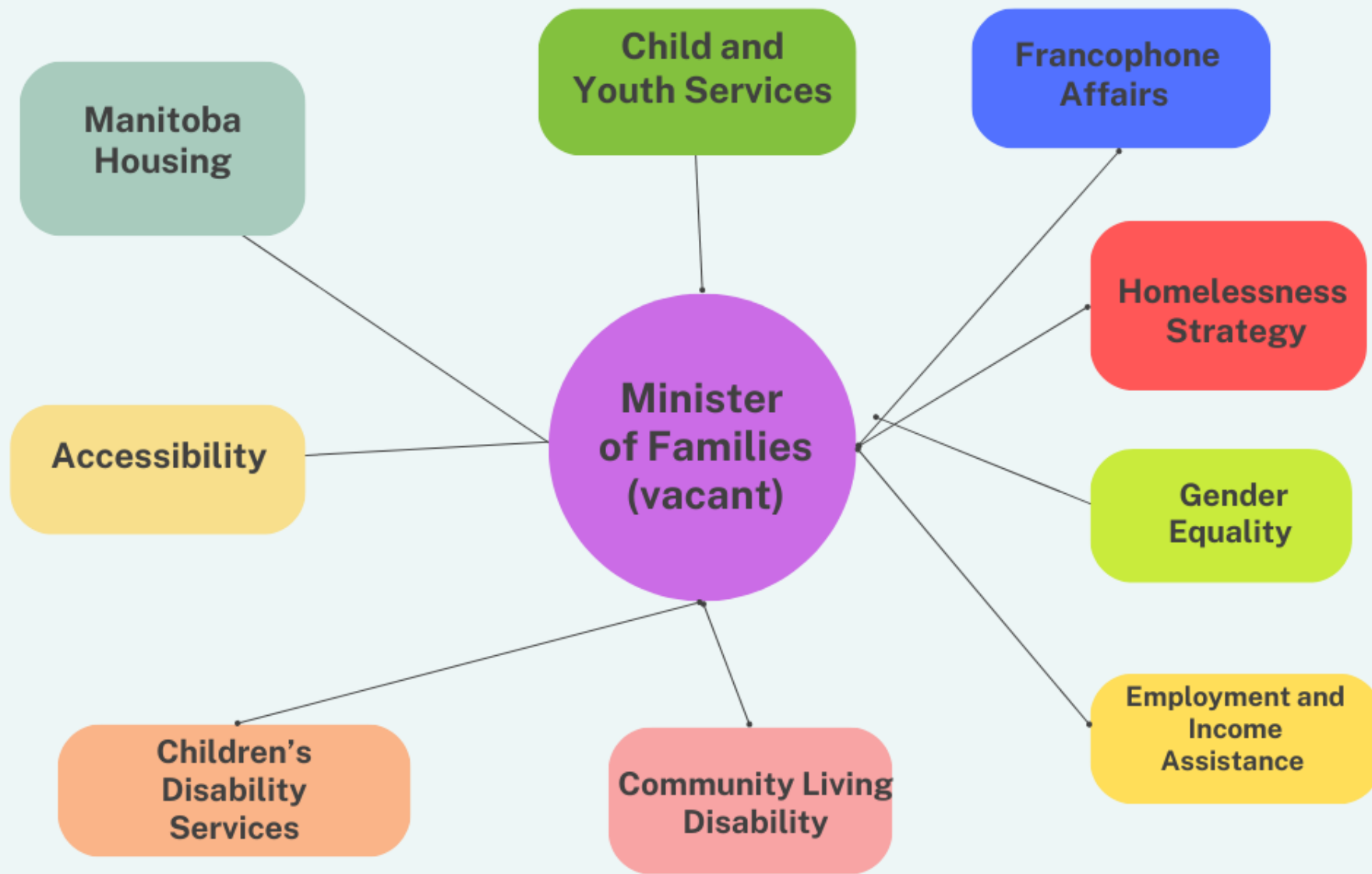


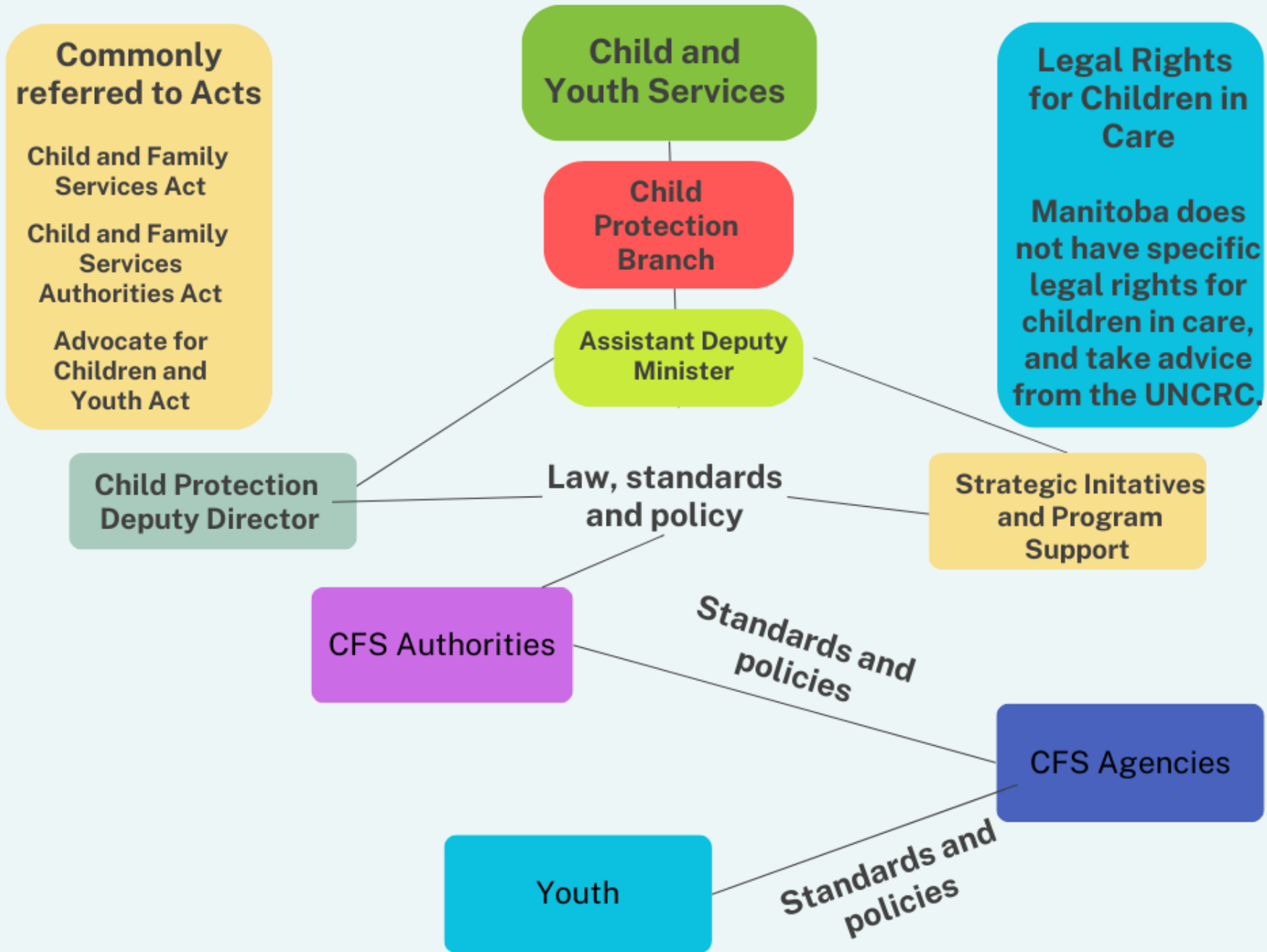
As of April 1, 2022 Federal post-majority support services assist First Nations youth up to and including the age of 25.

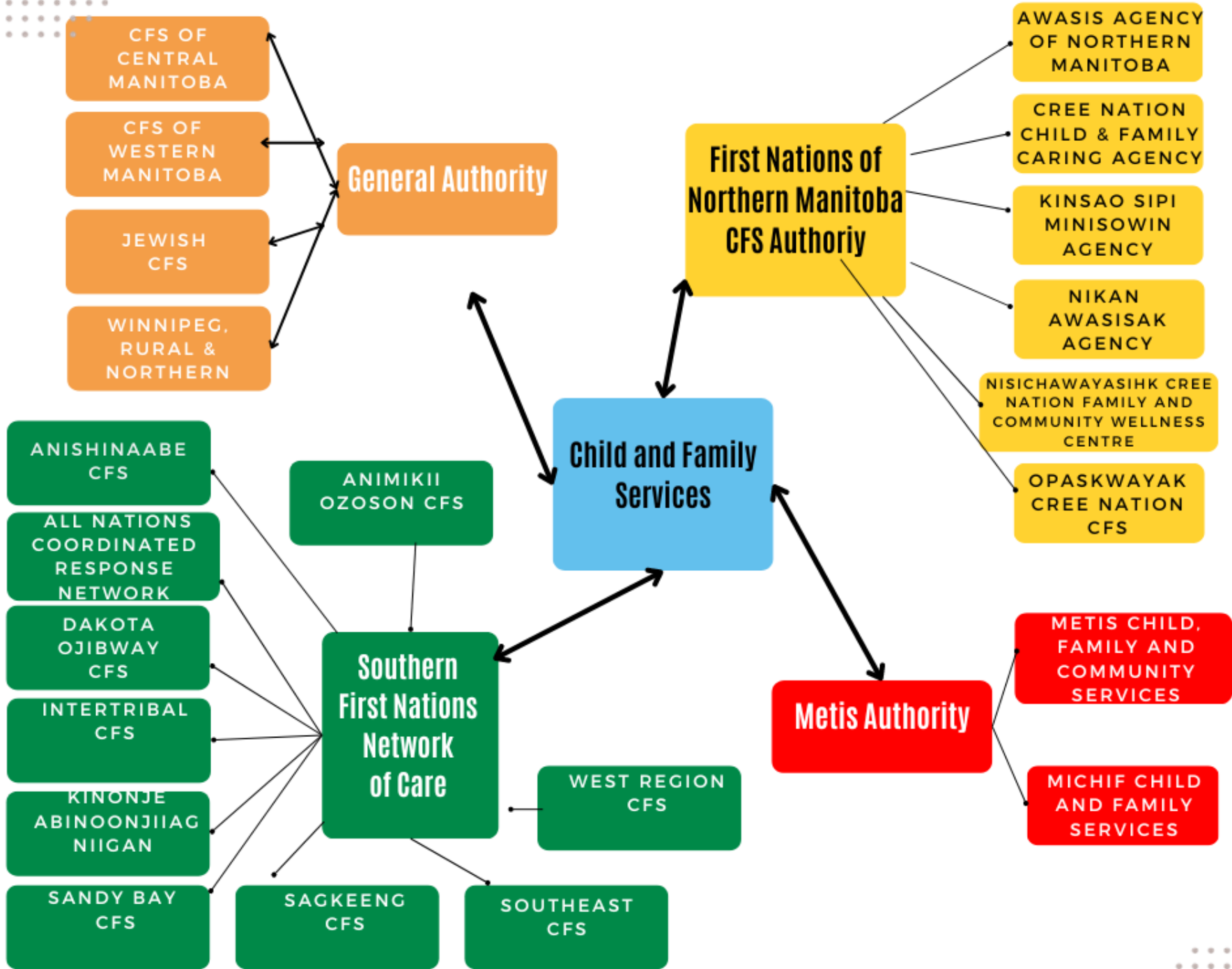
*Agreements with Young Adults

Manitoba is located on the ancestral territory of the Anishinaabeg, Cree, Oji-Cree, Dakota, and Dene Peoples, and the homeland of the Red River Metis Nation. The Futures Forward Program and VOICES: Manitoba's Youth in Care Network offices are located on the land that falls under Treaty 1, which was signed in 1871 and facilitated the theft of this land from several local Anishinaabe First Nations.

- **Manitoba has approximately 9,700 children in care**
- **90% of children in care are Indigenous**
- **The age of majority is 18 years old**
- **AYA program available until 21 (conditional)**
- **Tuition-waiver program funded by post-secondary institutions**







Sources & Resources: Scan QR Code



Thank You!

Project Lead contact
info:

melanie@cwlc.ca

Twitter

@melaniemdoucet &

@CWLC_LBEC



An Accountability Framework For Equitable Transitions to Adulthood for Youth in Care in Canada

The Equitable Standards & Evaluation Model



CWLC | **LBEC**

Child Welfare League of Canada
Ligue pour le bien-être de l'enfance du Canada

Dr. Melanie M. Doucet, Consultant & Project Lead
Cindy Miles, Director of Community & Government Partnerships, Partners for Youth

An Accountability Framework For Equitable Transitions to Adulthood for Youth in Care in Canada

The Equitable Standards & Evaluation Model



CWLC | **LBEC**

Child Welfare League of Canada
Ligue pour le bien-être de l'enfance du Canada

Dr. Melanie M. Doucet, Consultant & Project Lead

Cheyenne Ratnam, CEO, Ontario Children's
Advancement Coalition (OCAC)

An Accountability Framework For Equitable Transitions to Adulthood for Youth in Care in Canada

The Equitable Standards & Evaluation Model



Dr. Melanie M. Doucet, Consultant & Project Lead

Jessica Knutson, Independent Advocate, BC

Susan Russel-Csanyi, Independent Advocate, BC & MB



Child Welfare League of Canada
Ligue pour le bien-être de l'enfance du Canada